

DORMA Automatics, Inc  
 924 Sherwood Drive  
 Lake Bluff, Illinois 60044  
 Toll Free: (877)-367-6211  
 Fax: (877)423-7999

THE STANDARD PACKAGE CONSISTS OF:

THE SLIDING DOOR HEADER, FRAMES, DOORS, SIDELITES WITH VERTICAL AND HORIZONTAL VINYL WEATHERSTRIP, RECESSED PULL OR POSITIVE LATCH.

STANDARD FINISHES: CLEAR BHMA 204  
 DARK BRONZE BHMA 313

SPECIAL FINISHES ARE AVAILABLE

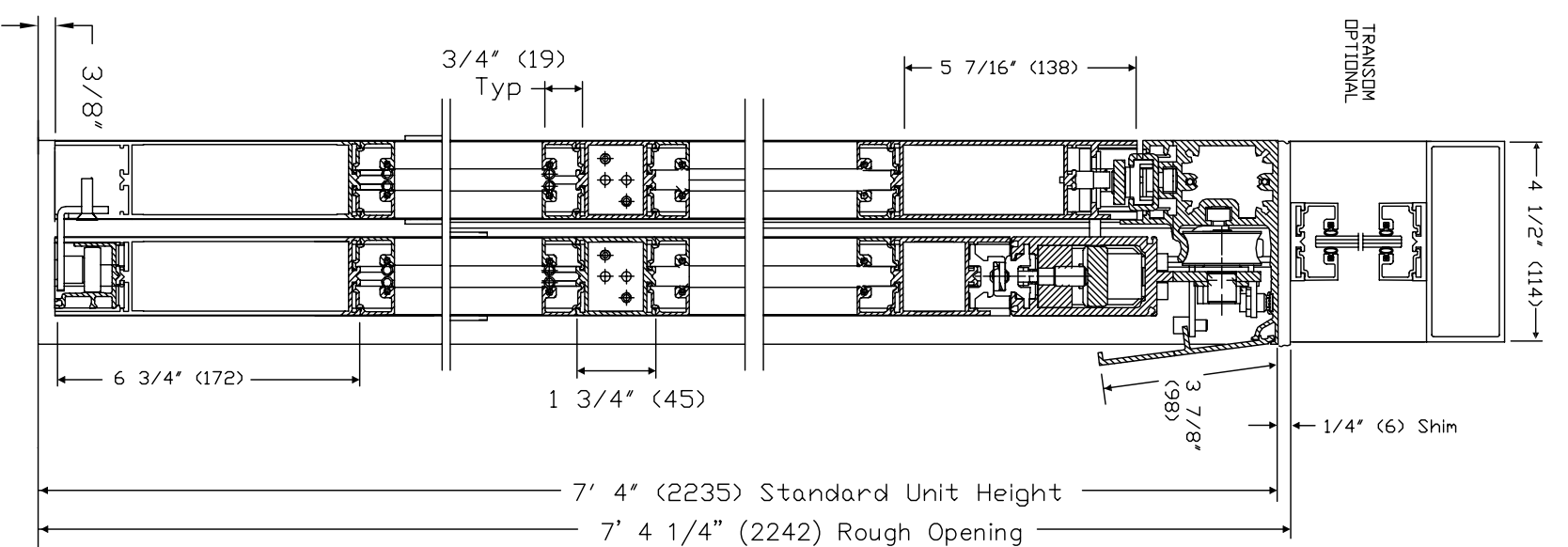
DRAWING DIMENSIONS ARE IN ENGLISH AND METRIC UNITS. METRICS ARE SHOWN IN MILLIMETERS, AS FOLLOWS: 1" (25.4)

REFER TO APPLICABLE LOCAL, STATE OR NATIONAL BUILDING CODE FOR MINIMUM DOOR HEIGHTS AND WIDTHS FOR ALLOWABLE EGRESS REQUIREMENTS. SEE REFERENCE TABLE BELOW.

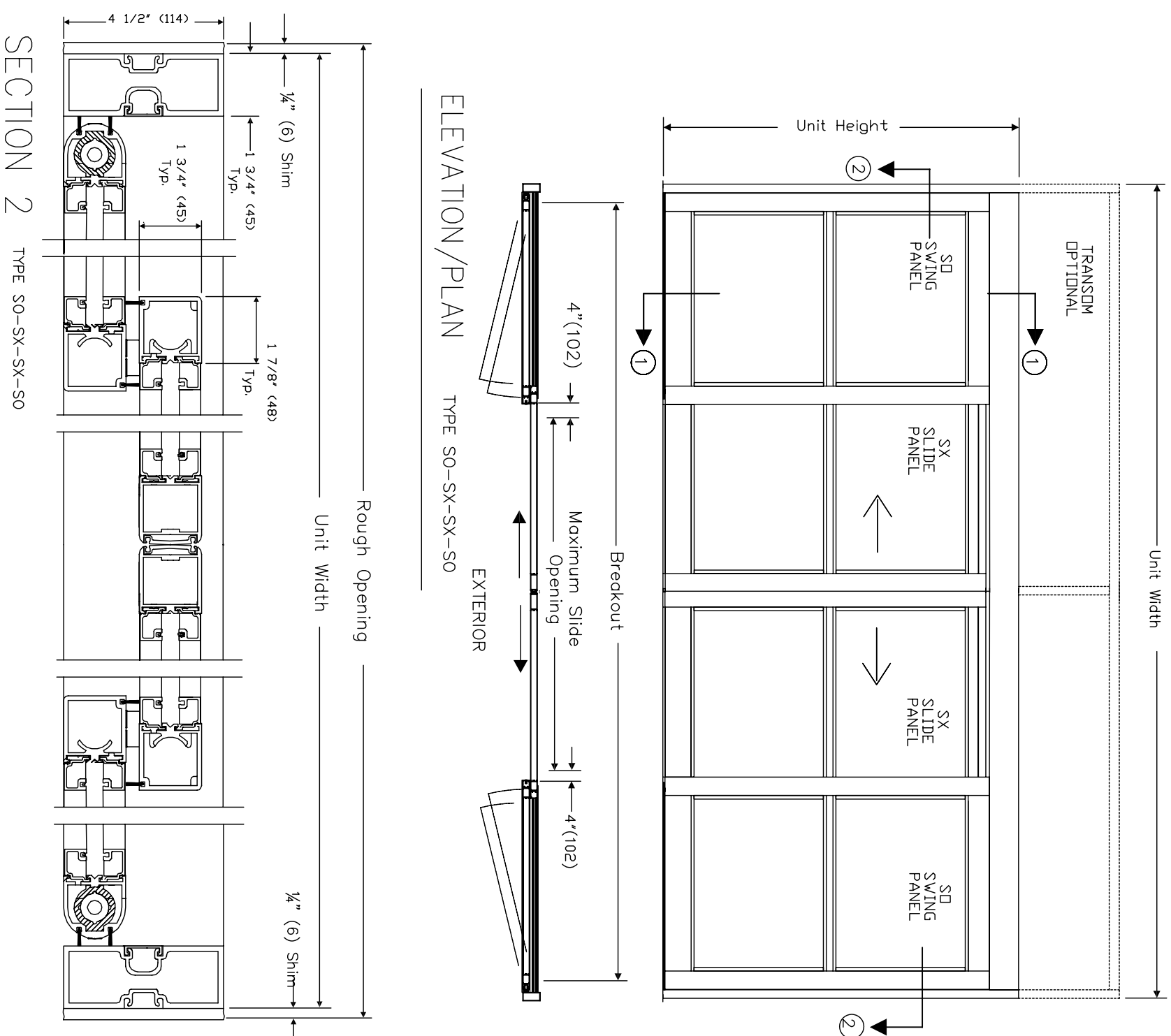
STANDARD PACKAGE SIZES

STANDARD UNIT SIZE WIDTH	STANDARD UNIT SIZE HEIGHT	MAXIMUM SLIDE OPENING	ROUGH OPENING WIDTH	ROUGH OPENING HEIGHT
9'-0" (2743)	7'-4" (2235)	40 1/2" (1029)	9'-1 1/2" (2756)	7'-4 1/4" (2242)
10'-0" (3048)	7'-4" (2235)	46 1/2" (1181)	10'-1 1/2" (3061)	7'-4 1/4" (2242)
12'-0" (3658)	7'-4" (2235)	58 1/2" (1486)	12'-1 1/2" (3670)	7'-4 1/4" (2242)
14'-0" (4267)	7'-4" (2235)	70 1/2" (1791)	14'-1 1/2" (4280)	7'-4 1/4" (2242)
16'-0" (4877)	7'-4" (2235)	82 1/2" (2096)	16'-1 1/2" (4890)	7'-4 1/4" (2242)

Note: Dimensions in ( ) are mm



SECTION 1 TYPE SO-SX-SX-SO  
 Door Shown in Open Position



SECTION 2 TYPE SO-SX-SX-SO