

DORMA Automotives, Inc
 924 Sherwood Drive 60044
 Lake Bluff, Illinois
 Toll Free: (877)-367-6211
 Fax: (877)-423-7999

THE STANDARD PACKAGE CONSISTS OF:

THE SLIDING DOOR HEADER, FRAMES, DOORS, SIDELITES WITH VERTICAL AND HORIZONTAL VINYL WEATHERSTRIP, RECESSED PULL OR POSITIVE LATCH.

STANDARD FINISHES: CLEAR BHMA 204
 DARK BRONZE BHMA 313
 SPECIAL FINISHES ARE AVAILABLE

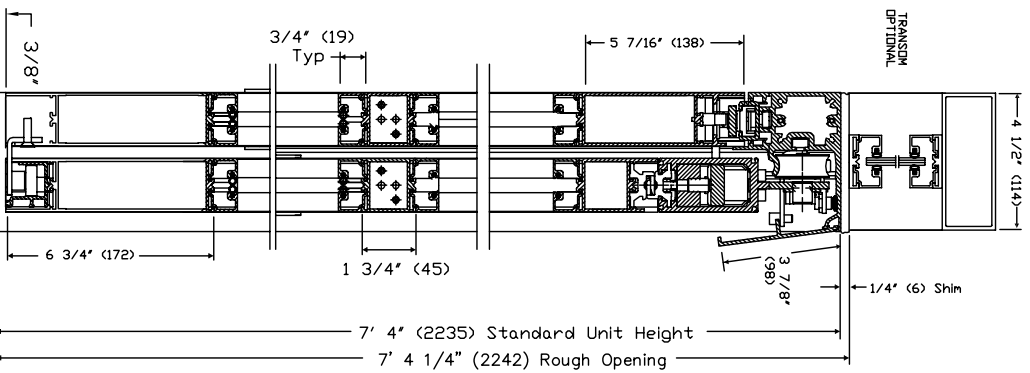
DRAWING DIMENSIONS ARE IN ENGLISH AND METRIC UNITS. METRICS ARE SHOWN IN MILLIMETERS, AS FOLLOWS: 1" (25.4)

REFER TO APPLICABLE LOCAL, STATE OR NATIONAL BUILDING CODE FOR MINIMUM DOOR HEIGHTS AND WIDTHS FOR ALLOWABLE EGRESS REQUIREMENTS. SEE REFERENCE TABLE BELOW.

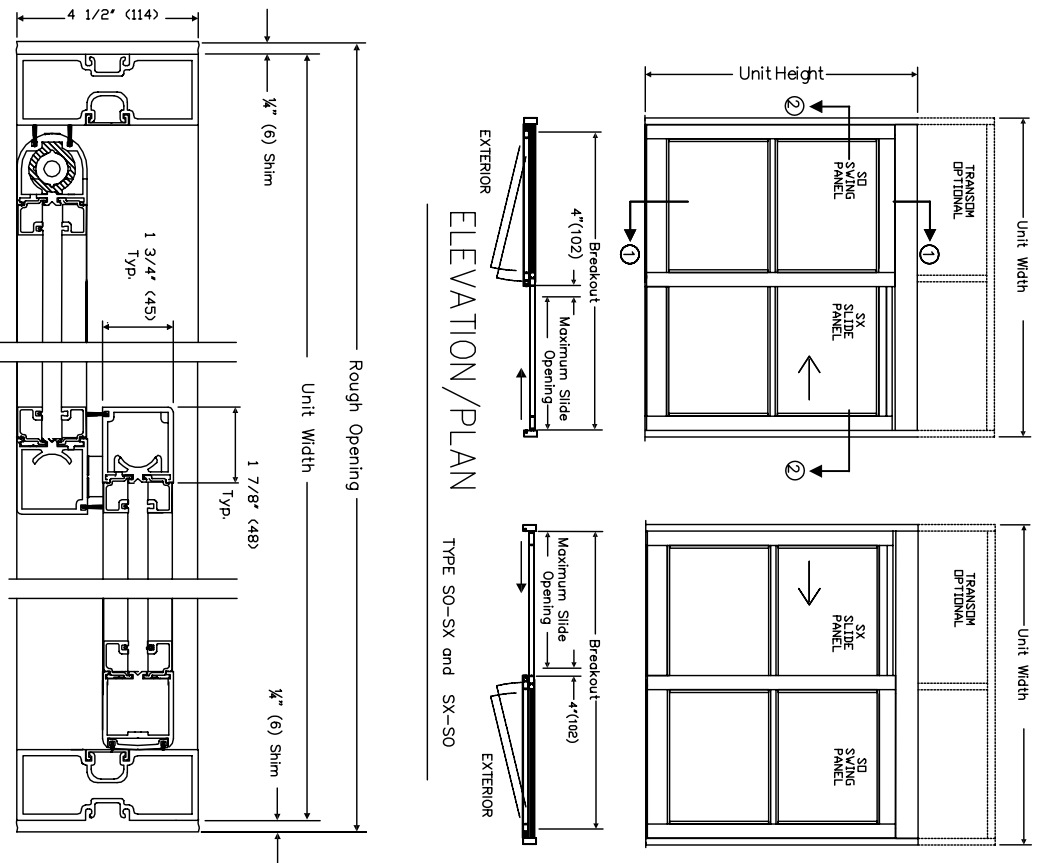
STANDARD PACKAGE SIZES

STANDARD WIDTH	UNIT SIZE HEIGHT	MAXIMUM SLIDE OPENING	ROUGH WIDTH	ROUGH OPENING HEIGHT
7'-0" (2134)	7'-4" (2235)	34" (864)	7'-1 1/2" (2146)	7'-4 1/4" (2242)
8'-0" (2438)	7'-4" (2235)	40" (1016)	8'-1 1/2" (2451)	7'-4 1/4" (2242)
8'-6" (2591)	7'-4" (2235)	43" (1092)	8'-6 1/2" (2604)	7'-4 1/4" (2242)
9'-0" (2743)	7'-4" (2235)	46" (1168)	9'-1 1/2" (2756)	7'-4 1/4" (2242)

Note: Dimensions in () are mm



SECTION 1 TYPE SO-SX, SX-SO
 Door Shown in Open Position



SECTION 2 TYPE SO-SX Shown, SX-SO Opposite

SLIDING DOOR SERIES 300
 ICU/CCU
 TYPE SO-SX, SX-SO
 Without Floor Track
 Narrow Slit
 3/06